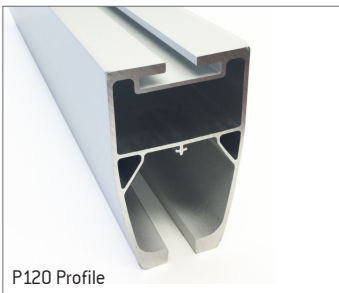
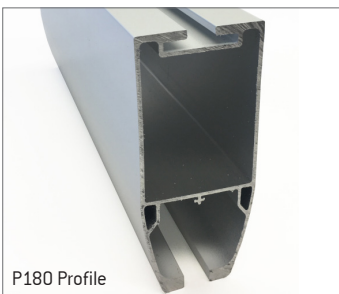


P87 Profile



P120 Profile



P180 Profile

Our rail profiles are made of extruded aluminum and are available in various standard lengths and profiles. All profiles are designed to offer fast and flexible installation and come complete with a full range of attachments and accessories. All rails are discreet, modern and lightweight, making them much easier to install.

Assorted Profiles

Our rails are offered in three different rail profiles. The P87 profile is mainly used for single rail systems or as the primary rail in a traverse system. It is available in assorted straight lengths as well as curved lengths. The P87 also has the option of a shelf profile for built-in flush mounted installations. The P120 and P180 profiles are both designed to be used as secondary rails in a traverse system or systems that require long distances between fixation points. They are available in lengths of up to 7m/23 feet.

Discreet and Versatile

Our rails are ready for our in-rail charging solution that offers continuous charging of

lifts. The unique installation of our technology does not require as many drops in the ceiling, saving time and money. Mounting can be done to ceilings, walls or floors regardless of the height.

Full Range of Accessories

Our rail systems come with a full range of accessories to accommodate the needs of most mounting situations. We offer pendulums, rail rollers, attachment kits, door stands, posts and poles, all of which guarantee the installation will be fast and simple.

HUMAN CARE SWEDEN (HQ)

Årstaängsvägen 21B
117 43 Stockholm
Phone: +46 8 665 35 00
Fax: +46 8 665 35 10
info.se@humancaregroup.com

HUMAN CARE AUSTRALIA

Unit 4, 49 Bertie Street
Port Melbourne, VIC 3207
Phone: +61 1300 132 736
Fax: +61 (03) 9645 4954
info.au@humancaregroup.com

HUMAN CARE CANADA

10-155 Colonnade Road
Ottawa, ON K2E 7K1
Phone: +613.723.6734
Fax: +613.723.1058
info.ca@humancaregroup.com

HUMAN CARE NEDERLAND

Elspeterweg 124
8076 PA Vierhouten
Phone: +31 577 412 171
Fax: +31 577 412 170
info.nl@humancaregroup.com

HUMAN CARE UNITED STATES

8006 Cameron Road, Suite K
Austin, TX 78754
Phone: +512.476.7199
Fax: +512.476.7190
info.us@humancaregroup.com

Accessories



Rail Rollers

Assorted models for portable or stationary lifts. Model no. 20107 shown.



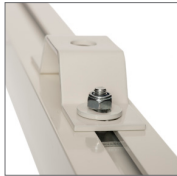
Traverse Rollers

Assorted models for use with traverse system. Model no. 50170 shown.



Pendulums

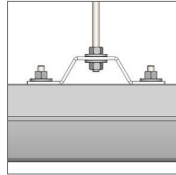
Assorted models and heights to accommodate installation in acoustic or uneven ceilings. Model no. 50190 shown.



Attachments

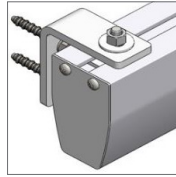
Attachment kits for mounting rails onto various materials. Model no. 50167 and 50168 shown.

Mounting Options



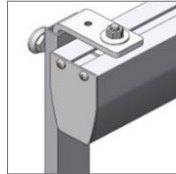
Ceiling Attachment

Used for installations in concrete and wood joist ceilings or together with pendulums. No drilling required in rails.



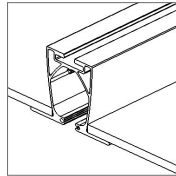
Wall Attachment

When ceiling attachment is not possible, wall attachments can be used with all rails.



Poles and Door Stands

Ideal for temporary use or when modification to the building structure is not permitted.



Flush Mounted

Ideal for suspended or false ceilings. Can be used with pendulums.

Lift Compatibility



Altair

Compatible with all Altair models. Part no. 55200, 55210 or 55220.



Roomer S

Compatible with Roomer S. Part no. 55300



HeliQ

Compatible with all HeliQ models. Part no. 55100, 55110 or 55120



HeliQ Power Traverse

Compatible with all HeliQ PT models. Part no. 55103, 55140 or 55150

Technical Specifications

Code	Dimensions [LxWxH]	Code	Dimensions [LxWxH]	Code	Dimensions [LxWxH]	Code	Dimensions [LxWxH]
P87		P120		P180		P87	
71236	250cm x 7cm x 8.7cm 98.4" x 2.7" x 3.4"	71241	300cm x 7.3cm x 12cm 118.1" x 2.9" x 4.7"	71245	550cm x 7.3cm x 12cm 216.5" x 2.9" x 4.7"	55601	Curve 45°
71237	300cm x 7cm x 8.7cm 118.1" x 2.7" x 3.4"	71242	400cm x 7.3cm x 12cm 157.5" x 2.9" x 4.7"	71246	700cm x 7.3cm x 12cm 275.6" x 2.9" x 4.7"	55602	Curve 60°
71238	400cm x 7cm x 8.7cm 157.5" x 2.7" x 3.4"	71243	500cm x 7.3cm x 12cm 197" x 2.9" x 4.7"			55603	Curve 90°
71239	550cm x 7cm x 8.7cm 216" x 2.7" x 3.4"	71244	620cm x 7.3cm x 12cm 244.1" x 2.9" x 4.7"			55604	Curve 90° Long Straight section 100cm
71240	700cm x 7cm x 8.7cm 275.6" x 2.7" x 3.4"						
Product Weight: 3.2kg/7.1lb		Product Weight: 4.4kg/9.7lb		Product Weight: 4.9kg/10.8lb		Product Weight: 3.2kg/7.1lb	

This product is manufactured in accordance with all relevant ISO standards.



Learn more about this product



Follow Us on Social Media



facebook.com/humancareworld



instagram.com/humancaregroup



linkedin.com/company/human-care-ab



pinterest.com/humancaregroup



youtube.com/channel/UC7fjINh3zTjRXP1IDf2Da0